

Truck loading at Neste Eesti AS Terminal

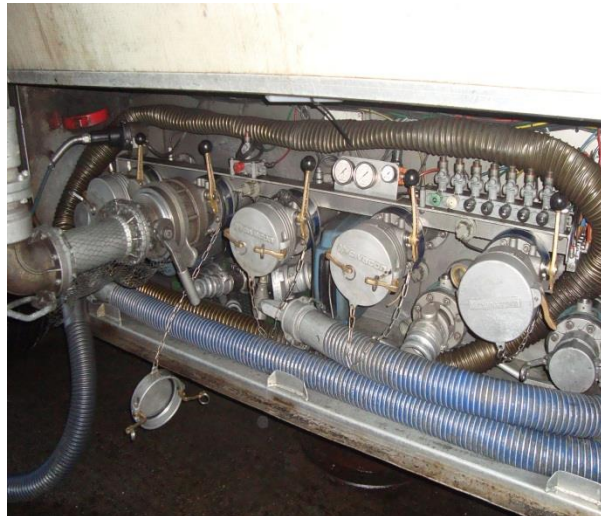
Technical and safety requirements

Truck loadings in Neste Eesti AS terminal, Port Muuga, Estonia

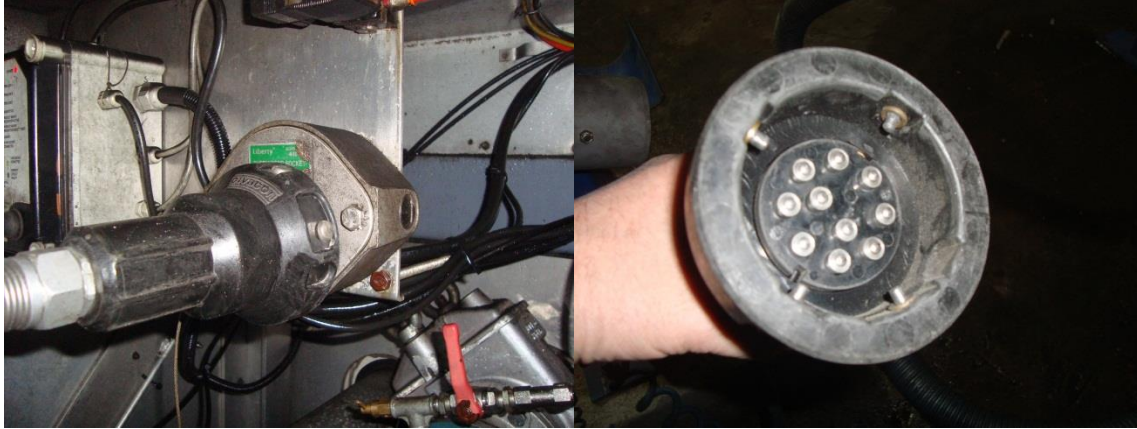
- Terminal is open for loadings at 08:00 – 20:00 daily
- 5 loading places (islands):
 - **No.1:** special products: colored diesel & solvents
 - **No.21; 22; 3; 4:** diesel fuel, gasoline 95 & 98
- Only bottom loading is available

Technical requirements for tank trucks

- Tank trucks must be fitted with 4" API bottom loading male adaptors.
- The height of the truck coupling from pavement must be 950..1500mm



- Overfilling prevention & grounding.
 - Option 1: trucks must have standard 10 – pin socket for connecting common optical overfill and grounding cable plug



- **Option 2:**
 - each tank compartment must have 2-pin socket for connecting thermistor overfilling plug



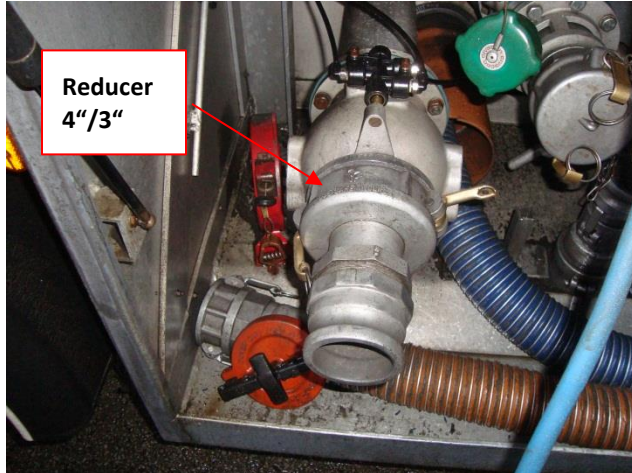
- truck must be fitted with special plug for grounding (**option 2** available only at islands 1 and 2)



- Loading vapour recovery:
 - Terminal hose has 3" cam-lock (female) connection
 - Driver may use own hose. In this case terminal's pipe end has 3" male camlock connector



- If truck connection has other diameter, the reducer must be used



- Truck must be equipped with UN number plates and indication of danger. In case gasoline 33/1203, Diesel 30/1202 and solvent LIAV230 case 30/1268.
- Truck and trailer must be equipped with signs (flammable liquid):



And finally, the most important requirement: all safety instrumentation must be in good, working condition!

Individual protective equipment

- Helmet
- Working clothes with long sleeves
- Oil-resistant & anti-static work shoes
- Oil-resistant gloves
- Protective glasses



14.04.2015